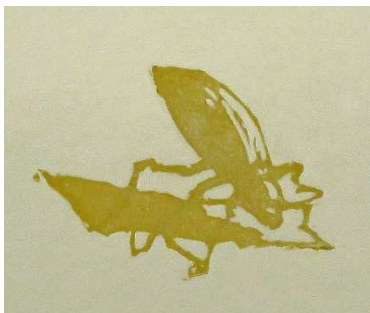


Reduction Block Relief Print

A single block is used to create multiple colors by alternately printing and carving, reducing the relief area of the block at each carving/printing. Sounds confusing and sometimes it does get that way. But most often, one is printing a value progression from light to dark where the block is carved between each value.



This example is a simple three color reduction print. The first carve is printed over all the required sheets of paper plus a few extra. Once the block is carved a second time, the first color layer cannot be reprinted.



For the second color, the relief areas in the original block are carved away. When the first and second layers are compared, one can see the areas that were carved away.

When the second layer is printed over the first layer, it creates a shadow effect, adding dimension to the image.



A third reduction was added to create the final image. At each stage, all the paper needed must be printed as once the relief area is carved a second or third time, previous layers cannot be reprinted.