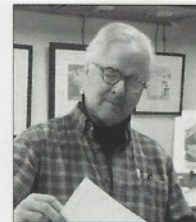


**UPCOMING SHOW**

Up to 12 works

**Ongoing**

Gerald Peters Gallery  
1011 Paseo de Peralta, Santa  
Fe, NM 87501, (505) 954-5700  
www.gpgallery.com

**SHOW LOCATION: SANTA FE, NM****LEON LOUGHRIDGE***Layer Upon Layer*

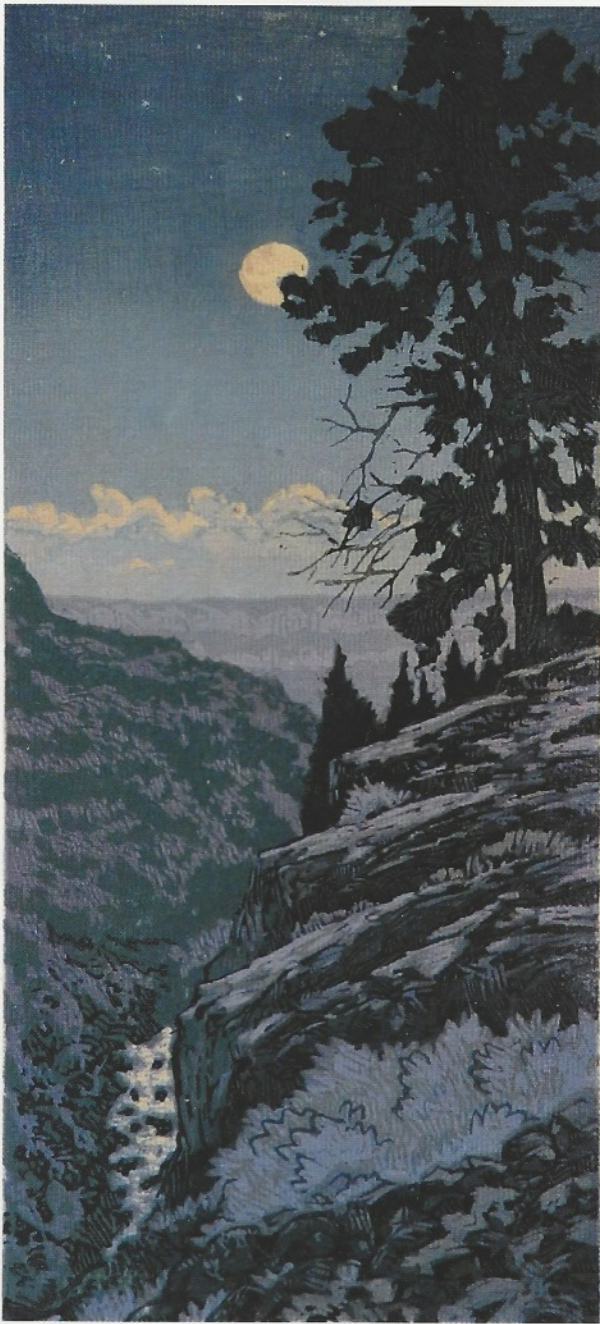
*Afternoon Chapel*, reduction woodblock print, 7½ x 7½"

**L**eon Loughridge's new woodblock prints are an evolutionary record of his work as an artist, he says, reflecting his growing knowledge of the Japanese print process, as well as a means in which to understand his feelings about the world around him. "The woodblock

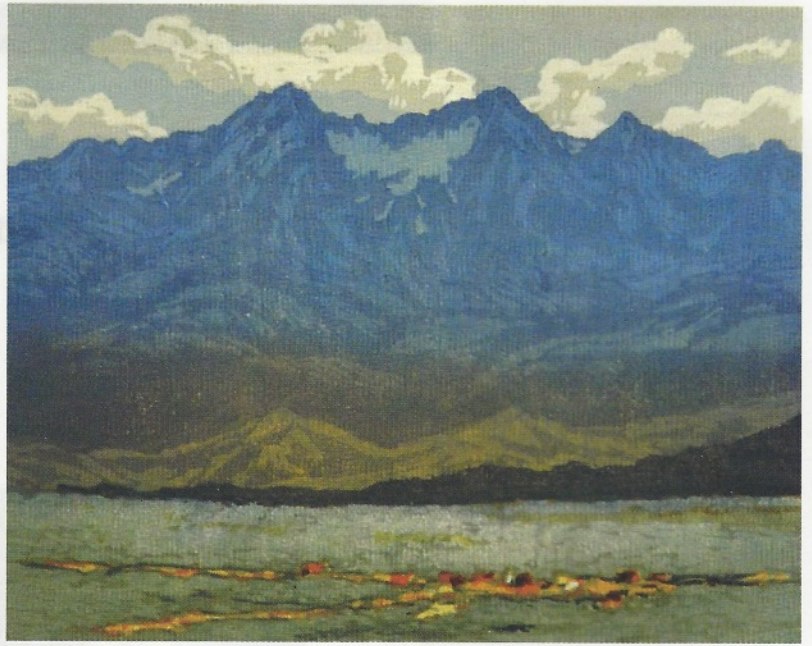
process becomes my vocabulary. Carving or printing techniques become descriptive notes that build upon the core abstraction, always striving for the spontaneous mood from the original sketch," he says.

Those original sketches are Loughridge's observations, rendered in watercolor while

out in nature, immersing himself in his surroundings. "My art reflects my emotions and connection to my subject. Having grown up in a rural ranch setting, environment becomes an entity that affects one's daily routine. That personal connection to the environment can evolve into a relationship, a dependency on



*Moon Over Gorge*, reduction woodblock print, 16 x 7"



*Wild Horses Below Mt. Blanca*, reduction woodblock print, 7½ x 8"



*Cicuye Morning*, reduction woodblock print, 16 x 20"


its weather swings or the nurturing quality of the surroundings. It is that connection that finds its way into my imagery," says Loughridge. The artist's sketches as well as his firsthand observations form the basis for his woodblock prints. *Cicuye Morning*, depicting Cicuye Pueblo at Pecos National Historical Park, captures the intense golden hues of morning light. *Moon Over Gorge*, a vertical nocturne, feels reminiscent of a traditional Japanese woodblock print.

These works and others will be shown at an upcoming exhibition at Gerald Peters Gallery in Santa Fe, New Mexico, through

the end of the year. "His most recent work features the historic chapel at Bishop's Lodge in Santa Fe. This summer, July to September, Loughridge [is] the first artist-in-residence at the newly renovated and legendary landmark," says gallery director Maria Hajic.

Having grown up on sprawling ranch land in Northern New Mexico, the heart of the Southwest is in Loughridge's bones. "I find refuge in the landscape I have lived around for so long. It is a constant source of inspiration. Dramatic weather shifts present abstract compositions, continually challenging my artistic approach. I sometimes wonder if

nature intentionally throws out new lighting effects, daring me to push beyond a mere rendering I've started," he says. "Nature has become my mentor, the one I seek out when compositions and painting become stagnant. The complexity of shapes and arrangements are often daunting. Yet, once I am involved in the composition, I see the larger value and color shapes that tie it all together...Art is a reflection of the artist." 🖱️

For a direct link to the exhibiting gallery go to   
[www.westernartcollector.com](http://www.westernartcollector.com)