

# San Ignacio

Size: 5.5" x 8.5"

Edition: 30

Release Date: October 2014

Print Processes: Serigraph and woodblock

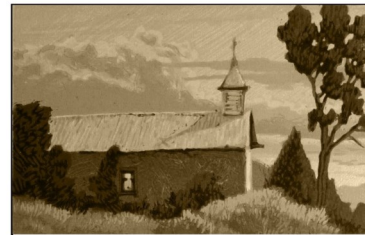
Client: Alianza de las Americas

A woodblock folio was created for the Alianza de las Americas, a Denver Art Museum support group, for their annual fund raiser. The small chapel of San Ignacio is located outside of Las Vegas NM in a small valley below Hermit's Peak. The feature woodblock is a color reduction woodblock signed and numbered. All the type and line illustrations were printed as serigraph.



## Annual Alianza Fund Raiser Print

### "San Ignacio"



An Original Woodblock  
 by Denver Artist Leon Loughridge

#### BIO - Leon Loughridge

Born; Denver, Colorado	1952
Colorado Institute of Art	1971-1972
United States Army, Graphic Designer	1972-1975

Raised in the open ranch land of Northern New Mexico, Leon developed an affinity for the Southwestern landscape. He was greatly influenced by his grandmother's involvement in Northern New Mexico art circles. Later study at the Colorado Institute of Art along with private study reinforced his abilities. Stationed in Germany while in the army, he was able to travel extensively throughout Europe, visiting museums and maintaining sketching journals. In addition, he studied painting techniques of the old masters for two years, finishing by copying a Franz Hals at the Stuttgart Stattsalerie Art Museum. Long having an interest in pen and ink, etching took on a special meaning from the museum's collection of etchings.

On his return to Colorado, Leon began to study the intaglio techniques and selling the prints in mountain galleries. In 1998, Leon purchased his first letterpress and received immediate success with the woodblock prints he produced. The layering of color in the woodblock process allowed him to better capture the atmospheric qualities of the Southwestern Landscape that have such a strong meaning for him.

Leon has continued to develop his printmaking skills and currently owns a publishing company, producing his Reduction Style Woodblocks as well as limited edition books. His woodblocks are exhibited nationally and collected by numerous museums. He and his wife also own a gilding studio, producing and restoring hand carved gold leaf frames for museums and collectors.

#### About The Process

##### RELIEF PRINTS

Traditionally, wood panels are used to create a relief block, though anything flat that can be carved can be used. The image is transferred onto the block and the areas that do not print are carved away. The high surfaces or uncut areas are inked and then a sheet of paper is laid over the inked block. Pressure is applied to the paper to transfer the inked areas to the paper.

##### Multi Block

A block for each color is cut and when printed, aligned to the other color blocks. Usually, the artist prints the lightest color first and the darkest color last. However, Gustave Baumann often printed in reverse, printing a dark first and the lighter colors on top.

##### Reduction Woodblocks

One block is used to create a multiple color print. The lightest color and the broadest area of the print is printed first for the entire edition, the block is then carved away leaving the next lightest color, which is printed. As the artist is continually removing material from the block to print the next color, the block is destroyed in the processes of making the image. The edition size is determined by how many acceptable impressions exist after the final color is printed.



Dry Creek Art Press  
 2377 South Downing Street  
 Denver, Colorado 80210