

INSIDE Contemporary Native American Art • State of the Art: Montana

Themes of Works For Sale at Upcoming Shows

AUGUST 2010

WESTERN ART

COLLECTOR



36

UPCOMING SHOW

Up to 20 works
Aug. 13-Oct. 17, 2010

Gerald Peters Gallery
1011 Paseo De Peralta
Santa Fe, NM 87501
(505) 954-5700

SHOW LOCATION SANTA FE, NM**LEON LOUGHRIDGE***Colors of autumn*

Leon Loughridge uses sketches mainly of Colorado and New Mexico for his latest pastels and woodblocks on exhibit beginning August 13 at Gerald Peters Gallery in Santa Fe.

"I'm taking sketches and quick watercolor studies I've made while traveling and build an image from that. The sketch has the core abstraction of the image," says Loughridge from his home in Colorado. "What I'm going for is interpreting the sketches into larger images and into woodblocks."

Equally proficient in woodblocks, pastels, and oils, this third solo show for Loughridge at the gallery will include up to six plein air

pastels and 12 to 15 new woodblocks all with a general autumn colors theme, hence the show's title, *Colores de Otoño (Colors of Autumn)*.

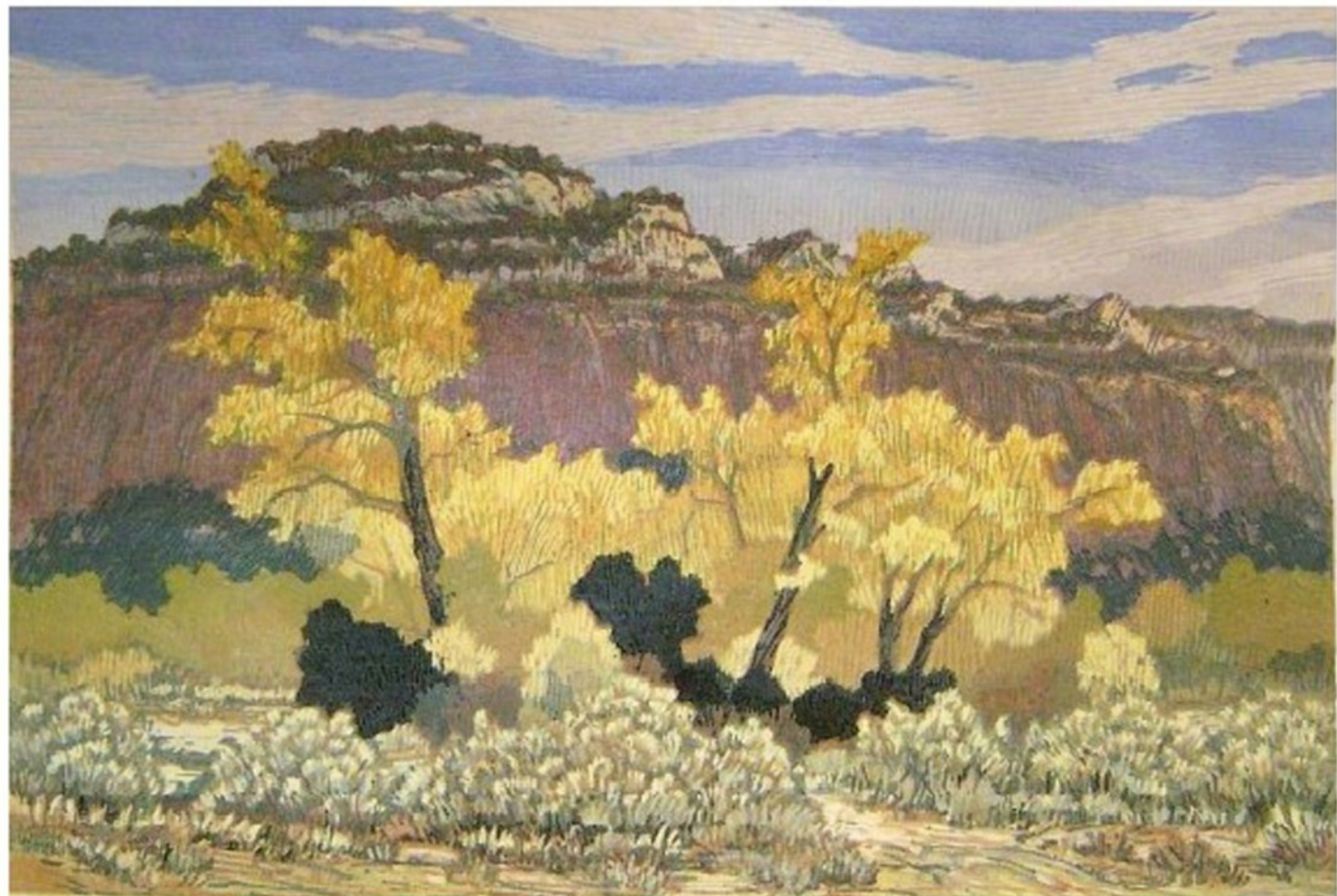
Loughridge enjoys working on location, sketching from life. His pastel and watercolor studies act as a roadmap for the woodblocks for gallery display and that also appear in hand-printed limited-edition books.

"When you're on-site, you look at something and you inadvertently distort something, like a mountain or a tree, and in the process you make it more prominent," the artist says. "To see the passion of the original sketch translated into the woodblock print, for me, is the sign of a successful print. The process of painting

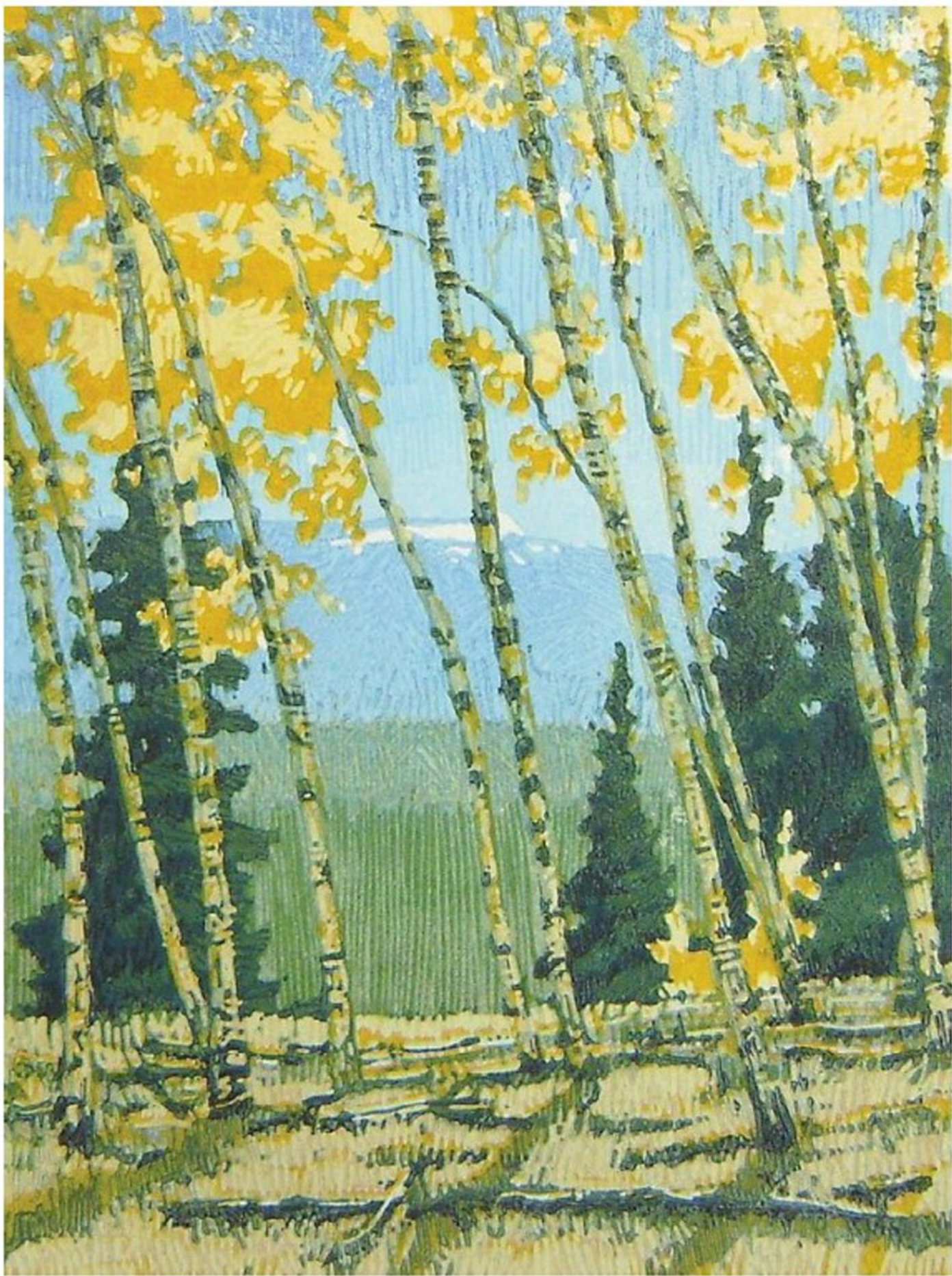
outdoors is a very direct and stimulating encounter with the subject, while creating a print in the studio becomes more methodical. In printmaking, my greatest challenge is to translate the energy of my original sketches into the woodblock print."

In using a more intuitive approach to printmaking and showing just enough disregard for the printing process to allow spontaneity, Loughridge is able to capture the vibrancy of his field sketches in the final print.

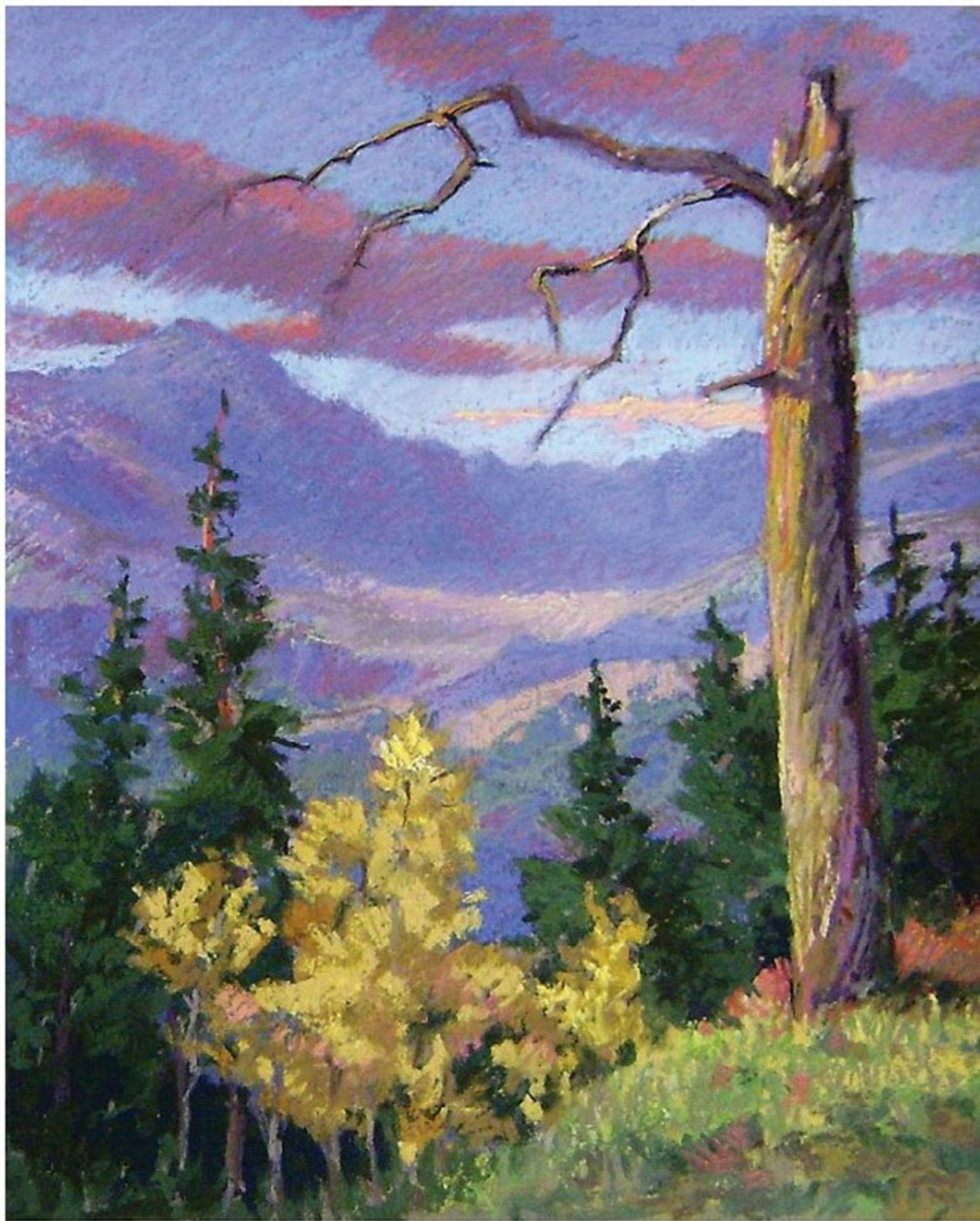
"I'm playing with printmaking technique, and it's fun to really push the limits of the process as well as pushing your concept of the image, and between the two you usually develop a



Cottonwood Wash, woodblock, 12 x 18"



Aspen Gold, woodblock, 12 x 9"



Fall Storm, Mt. Evans, pastel, 14 x 11"



Couse Studio, woodblock, 9 x 9"



Gorge Sunrise, woodblock, 9 x 9"

The Gallery Says . . .


"Leon's woodblock prints convey an astonishing technical ability and bring to life the spirit and artistry of the American Southwest. His subtle color tones and beautifully constructed compositions recreate the natural world in its most elemental and beautiful forms."

**– Maria Hajic,
Director of Naturalism,
Gerald Peters Gallery**

strong image," he explains. "There's strong color in these images and I'm excited about them. There's also a strong abstraction in the images, which is what I'm always looking for."

Some of the images in this new group evoke strong color and high contrast while others offer subdued lighting with muted hues. Always looking for big, dramatic shapes in nature, in *Aspen Gold*, Loughridge takes the abstraction of crossing lines and the shadows of tree branches and trunks and breaks it down.

"That's usually how the sketches start out, but then to pull it back to a visually identifiable image, that's the challenge," he notes.

An established painter and printmaker, Loughridge's subject matter reflects an affinity for the Western landscape, especially botanicals, historical sites and vistas. His work can be found in several private and public collections and juried shows. He and his wife, Joan, are established gilders, restoring and recreating period frames for area museums. 

For a direct link to the exhibiting gallery go to

www.westernartcollector.com

Price Range Indicator

Our at-a-glance Price Range Indicator shows what you can expect to pay for this artist's work.

	Small	Medium	Large
WOODBLOCKS	\$350	\$1,000	\$1,700
PASTELS	\$650	\$1,150	\$1,800